

# DIN 906

## Tappo conico con cava esagonale

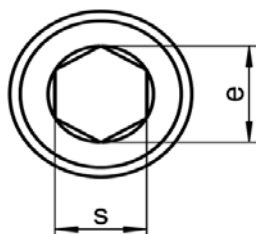
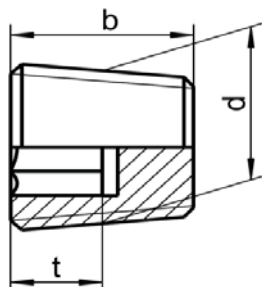
Internal drive pipe plug- Conical thread-Hexagon socket

Disponibile/Available

A2



A4



s	5	7	8	10	12	17	22	24
e	5,7	8	9,2	11,4	13,7	19,4	25,2	27,4
b	8	10	10	10	12	12	18	20
t	4	5	5	5	6	6	11,5	11,5
	5	7	8	10	12	17	22	24
d*	R 1/8"	R 1/4"	R 3/8"	R 1/2"	R 3/4"	R 1"	R 1"1/4	R 1"1/2
d**	M8X1							

\* Filetto gas Whitworth secondo DIN 3858

Classe di tolleranza 2 (filetto corto)

\* *Whitworth pipe thread as in DIN 3858*

*tolerance class 2 (short thread)*

\*\* Filettatura metrica esterna conica secondo DIN 158-1

(filetto corto)

\*\* *Metric external taper screw thread as in DIN 158-1*

*(short thread)*

last edit 07/08/2019

DRAWING N. 1039